

POLICE ACTIVITIES LEAGUE

EGG HARBOR TOWNSHIP & ATLANTIC COUNTY

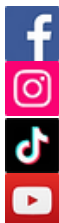
NON-PROFIT, VOLUNTEER, YOUTH, ORGANIZATION ESTABLISHED 1989

DISCOVER THE POSSIBILITIES



BEFORE AND AFTERCARE PROGRAMS & SUMMER CAMPS

FOLLOW US ON SOCIAL MEDIA!



@OFFICIALEHTPAL

@EHT_PAL

@PALOFEHT_ATLANTICCOUNTY

@ATLANTICCOUNTYPAL



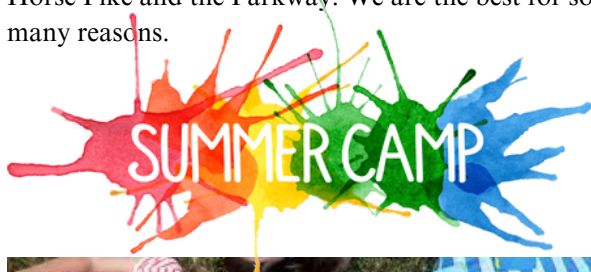
SCAN FOR
MORE INFORMATION

2542 Ridge Avenue
Egg Harbor Township, NJ 08234
(609) 645-8413 / EHTPAL@comcast.net
www.EHTPAL.org

PAL SUMMER CAMP



Our summer camp is located on a beautiful sprawling 35-acre campus with 45,000 square feet of enclosed building space, indoor sports arena, rock-climbing wall, a fully equipped E-Sports room, media center, a 14-inch domed telescope and 3 outdoor pavilions. Our campers, grades K-9, enjoy a variety of indoor/outdoor games, waterslides, bounce houses, laser tag, go-kart rides, basketball, gaga ball, volleyball, wiffle ball, arts and crafts, experiments, theme days, weekly field trips and soooo much more! We are centrally located in Egg Harbor Township with easy access to the Atlantic City Expressway, Rt 322/Black Horse Pike and the Parkway. We are the best for so many reasons.



WE HAVE RENTALS

We have meeting spaces for small meetings or large gatherings, a warming kitchen, turf field, recording studio and even an Esports room are available for rent. Additionally, we have projectors, screens, 3D printers, televisions, inflatables, tables, and chairs all available for rent for onsite events.

BOARD OF DIRECTORS



Captain Hector Tavaréz

(Retired Egg Harbor Township Police Department)
Founder & Executive Director

Robert Ortiz

Board Chairman
Atlantic Care

Vince Brotherton

Recording Secretary
CDW

Jen Heller

Treasurer
Polistina and Associates

Eric Scheffler

Atlantic County Sheriff
(Retired)

Wayne Schloss

AllZone
HVAC/Construction

Frederick Spano

EHTPD Chief of Police

We are non-profit, 501(c)(3), youth organization established in 1989. We are NOT funded by taxpayer dollars and rely on public contributions, sponsorships, donations, fundraising activities, grants, and good business practices to provide our programs. Please consider supporting our mission. If you would like to discuss how you or your company can become more involved email us at EHTPAL@comcast.net or call us at 609-645-8413.

DISCOVER THE POSSIBILITIES

SCHOOL CLOSURE CAMPS

Anytime school is closed (holidays, teachers convention, half-days, winter and spring breaks, and snow days, yes, even snow days!!!) Big PAL School Closure Camps are available to provide a safe and nurturing environment for your child. We are available from 6:30am to 6pm every day of the work week.

EMERGENCY CHILDCARE PROGRAM

Because emergencies and the unexpected happens, we offer emergency childcare services. Register in advance to be prepared for the unexpected. When schools close due to inclement weather or your childcare needs change for any reason, we've designed a program to give parents peace of mind, knowing they will not need to miss a day's work because they are unable to find a babysitter on short notice. The Police Activities League of Egg Harbor Township and Atlantic County strives to meet the needs of our community, children and parents. We've got you covered.



COMMUNITY HEROES DISCOUNTS

First Responders, military personnel, and government employees, will be offered a 10% discount on all our childcare programs. We appreciate the courage and dedication of our Community Heroes, who work tirelessly to deliver much needed services. As a non-profit organization, the very nature of who we are is to give back to the community when we are able to do so. This is our way of showing we appreciate our community heroes.

SOCIAL-EMOTIONAL LEARNING (SEL) PROGRAM

At PAL Summer Camp, our campers discover the possibilities within themselves. We utilize a sophisticated social-emotional learning program where our campers learn: self-reflection and self-management; work with others to accomplish task-oriented goals; identify the strength of group members to accomplish goals; communicate effectively with peers; and increase empathy and compassion for others. Campers develop a stronger sense of possibilities within themselves by participating in a series of activities and events designed to tap into their social/emotional development, along with their intellectual and physical development, all while engaged in a fun-filled summer with their fellow campers. Our main goal for Summer Camp is to facilitate the growth of the *whole person* in each camper in a fun and enjoyable environment.

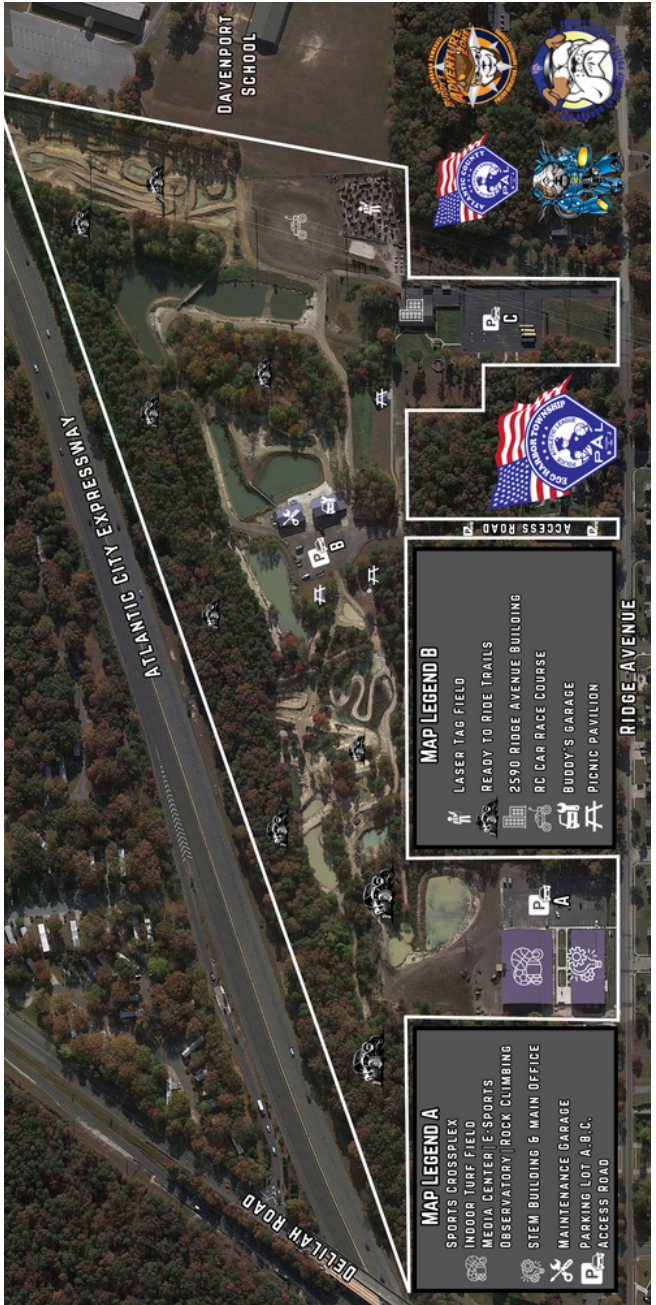


BIG PAL'S BEFORE & AFTER CARE

Children attend our Before and After Care Program located in our 14,000 square-foot STEM building with access to our 24,000 square-foot Crossplex facility. Our Before and After Care children not only get homework help, but also enjoy a variety of indoor/outdoor games, bounce houses, basketball, gaga ball, wiffle ball, arts and crafts, and soooo much more! Hours of operation for our morning program starts at 6:30 am until school starts. The afternoon session begins at the end of the school day until 6 pm.

POLICE ACTIVITIES LEAGUE

Egg Harbor Township/Atlantic County
 2542 Ridge Ave., Egg Harbor Township, NJ
 Campus Map



WWW.EHTPAL.ORG